



How To Apply Your  
Perfect Bite™ Set  
Of

Custom Designer

**DRACULA FANGS™**



1295 ITHACA DR., BOULDER, CO 80305

w/**Non-Toxic Custom Formulated α1 [Alpha One] Thermoplastic™**

US PATENT NO. 5,547,381 & PATENTS PENDING

Once you correctly install your *Custom Designer* Dracula Fangs you can:

- Speak Easily, Clearly, And Wear Comfortably
- Feel Natural
- Take Them In & Out As Much As You Want
- Best of All, They Won't Fall Out!

**WARNING:** *Custom Designer* Dracula Fangs are not a toy. They are for adult use. Do not wear if you have dental plates, wire work, or wear braces. It may take a dentist to remove *Custom Designer* Dracula Fangs from your dental plates, wire work, or braces.

**MATERIALS NEEDED:**

1. Mirror, preferably an adjustable tabletop mirror
2. Vegetable Oil and a paper towel
3. Spoon, preferably plastic, and a coffee mug

**NOTE:** α1 Thermoplastic™ is Specially Formulated For Easy Sculpting! Use only Non-Toxic Custom Formulated α1 Thermoplastic for proper fang installation!

†**IMPORTANT**†: Before you begin, put vegetable oil on your fingers and thumbs for easy working with α1 Thermoplastic™ while in its melted state.

**CREATE YOUR Custom Designer DRACULA FANGS:**

Place each Fang up into your canine teeth. If the top edge of the Fang goes above your gum line, cut and/or file down the top edge of the Fang to fit your gum line.

Place ½ of the Custom Formulated α1 Thermoplastic™ granules into the spoon. (Fig. A)



Fig. A



Fig. B

Heat coffee mug full of water to boiling. Immediately, slowly dip the spoon w/ α1 Thermoplastic™ into the hot water until it melts and becomes clear. (Fig. B)

Quickly dip fingers and thumbs into the hot water to moisten them. Then roll a daub of the α1 Thermoplastic™ between your thumb and forefinger. (Fig. C) (Handle α1 Thermoplastic™ gingerly as it will be hot for a few seconds)

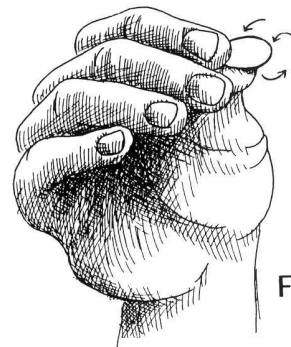


Fig. C

Place the daub into the cavity of the Fang. (Fig. D)

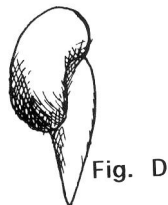


Fig. D

Make a wing from the top of the daub going back towards your pre-molars. (Fig. E)

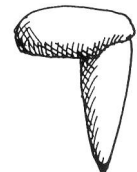


Fig. E

IMMEDIATELY, Forcefully push the Fang straight up into your canine tooth so that the excess α1 Thermoplastic™ seats around the two ribs inside the fang cavity, also squirts out around canine (Fig. F), and most importantly starts to go out the hole in the back of the fang. (Fig. N) (Make sure that the Thermoplastic is hot enough to go through the back hole of the fang for proper anchoring.)

**NOTE:** When you first put the Fang and melted α1 Thermoplastic™ on your tooth, it will feel like the Fang will not stay. This is because the α1 Thermoplastic™ has not yet hardened, thus giving you control in positioning the Fang.

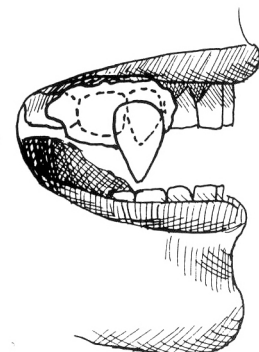


Fig. F

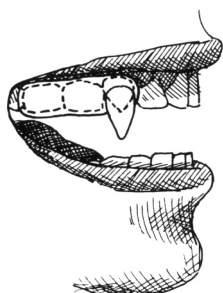


Fig. G

Quickly knead the excess α1 Thermoplastic™ back around your 1<sup>st</sup> pre-molar (and 2<sup>nd</sup> pre-molar if necessary), making a thin molding around your teeth. (Fig. G) Keep biting and clenching your teeth to create a natural bite with the α1 Thermoplastic™. (Very important to do while Thermoplastic is still soft, for a Perfect Bite)

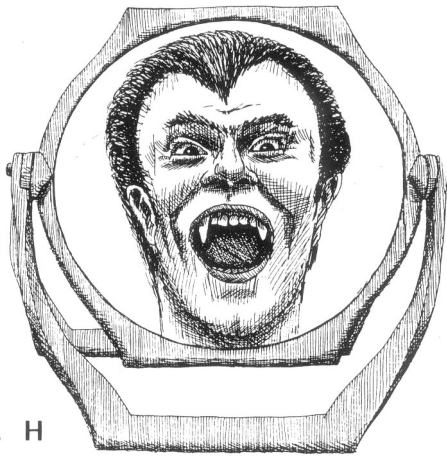


Fig. H

Look in the mirror while you are doing this to make sure that your Fang is positioned correctly, straight up and down. (Fig. H)

† **IMPORTANT** †

After completing these steps, leave the Fang appliance in for 3 minutes so that the **α1 Thermoplastic™** will harden.

**NOTE: DO NOT LET THE α1 THERMOPLASTIC™ COMPLETELY HARDEN IN YOUR MOUTH otherwise it may be extremely difficult to remove. Make sure that you remove the new Fang appliance within 5 minutes of first installing the Fangs. This will also slightly enlarge the Fang appliance cavity and make it easier to take in and out.**

To remove the Fang appliance, gently put the nail of your forefinger over the top of the appliance and pull outward & down. Do Not remove the Fang appliance by grabbing the Fang as it may separate from the appliance. Finally, remove Fang appliance from your mouth and allow it to air harden.

Now you are ready to create your other Fang appliance. (Be sure to re-heat water to boiling to make sure thermoplastic will go through the back hole of the fang for proper locking anchoring.)

**NOTE: At any point, if you don't like the fit of your Custom Designer Dracula Fangs you can simply re-melt the α1 Thermoplastic™, pull it out of the Fang cavity and start over again.**

**ENHANCE YOUR CUSTOM DESIGNER DRACULA FANG APPLIANCE (OPTIONAL):**

Eliminate excess **α1 Thermoplastic™** to be more Realistic and Comfortable.

To melt off the excess **α1 Thermoplastic™** that may be covering your front teeth, simply dip the excess portion section of the Fang appliance back into the hot water. (Fig. I)



Fig. I

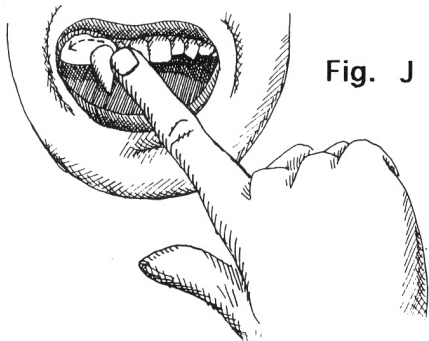


Fig. J Once the dipped portion of the appliance softens, insert the Fang appliance back into your mouth,. With your forefinger, smooth repeatedly the excess **α1 Thermoplastic™** up and over the top of the Fang. Quickly repeat this up and over motion until **α1 Thermoplastic™** is clear of your front and you have the look you want. (Fig. J)

Then, cut off resulting extra build up of **α1 Thermoplastic™** above the Fang and gum-line. (Figs. K & L)

Then, dip the cut edges quickly into hot water to smooth sharp edges. Although **α1 Thermoplastic™** is non-toxic, if it bothers your gums at all, remove portion that touches gums.

Also, for easier speech and easier removal of the Fang appliance, cut off the part of the appliance covering the inside portion of your teeth. (Fig. N)  
The Fang will still hold in place.

Eating is not recommended with your Fangs, but there is no problem drinking with them. (Careful with very hot beverages as it could melt Thermoplastic)

If after storing your Custom Designer Dracula Fangs a long time (say a year), and the appliance feels tight, quickly dip the appliance in hot boiled water and it will re-adjust to your teeth.

**APPLYING LOWER CUSTOM DESIGNER DRACULA FANGS:**

This requires another pair of Custom Designer Dracula Fangs. (Fig. O) Install both upper Fangs first. Install lower Fangs using the same method while upper Fangs are in. It is helpful for the points of the lower Fangs to hit the upper Fangs Thermoplastic to prevent irritation. Generally this is accomplished by lining your lower Fangs straight up & down under your upper canines.

Using both upper & lower Fangs, may not allow you to close your jaw completely and may take some practice in speaking clearly.

The LOOK, however, is Awesome!

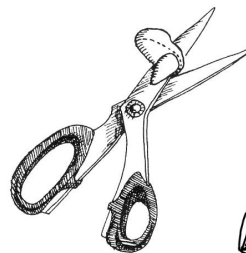


Fig. K

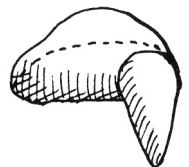


Fig. L

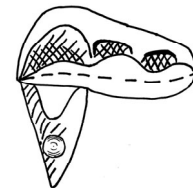


Fig. N



Fig. O